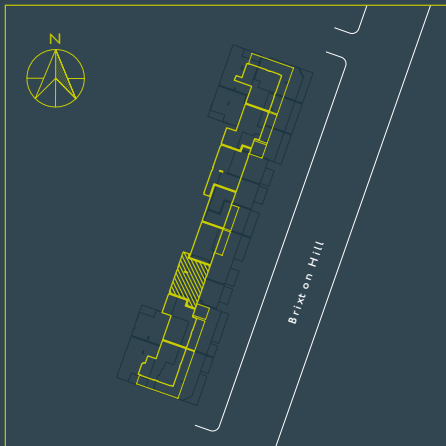


TWO BEDROOM

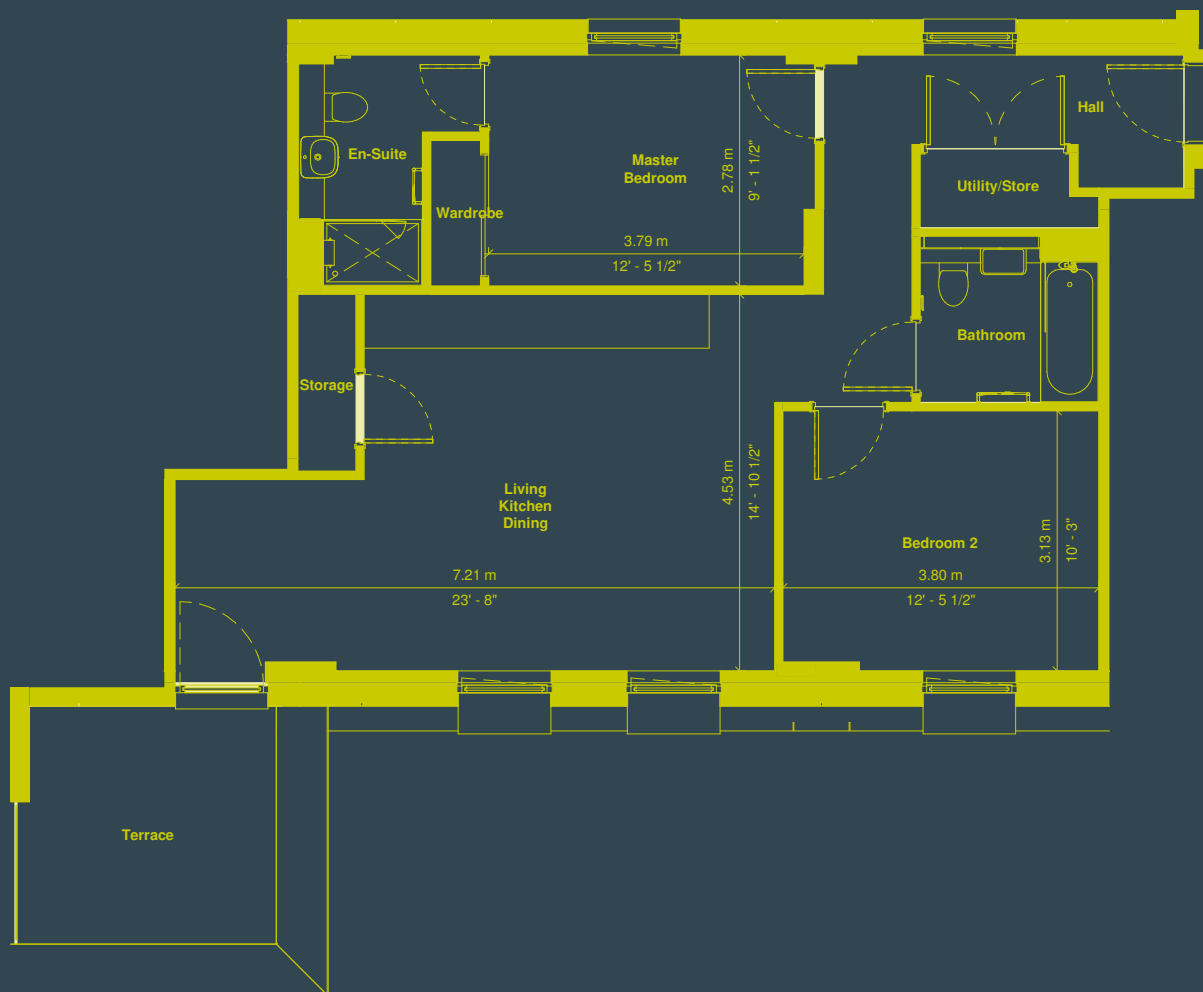
TYPE 2B4P-G



TOTAL AREA: 76.1m²/818.8ft²

APT
06.06

LVL
6



PLEASE NOTE THAT WINDOW, DOOR, BALCONY AND TERRACE CONFIGURATIONS MAY VARY DEPENDING ON PLOT. KITCHEN LAYOUTS ARE INDICATIVE ONLY. PLEASE CHECK WITH YOUR SALES ADVISOR FOR DETAILS.