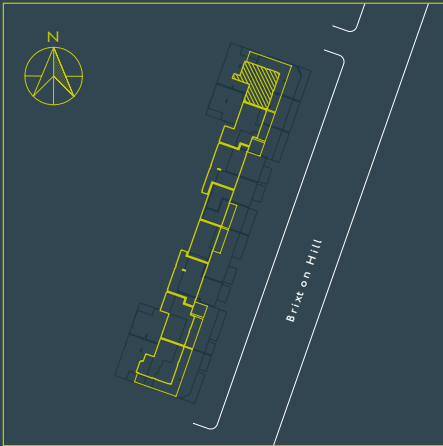


TWO BEDROOM

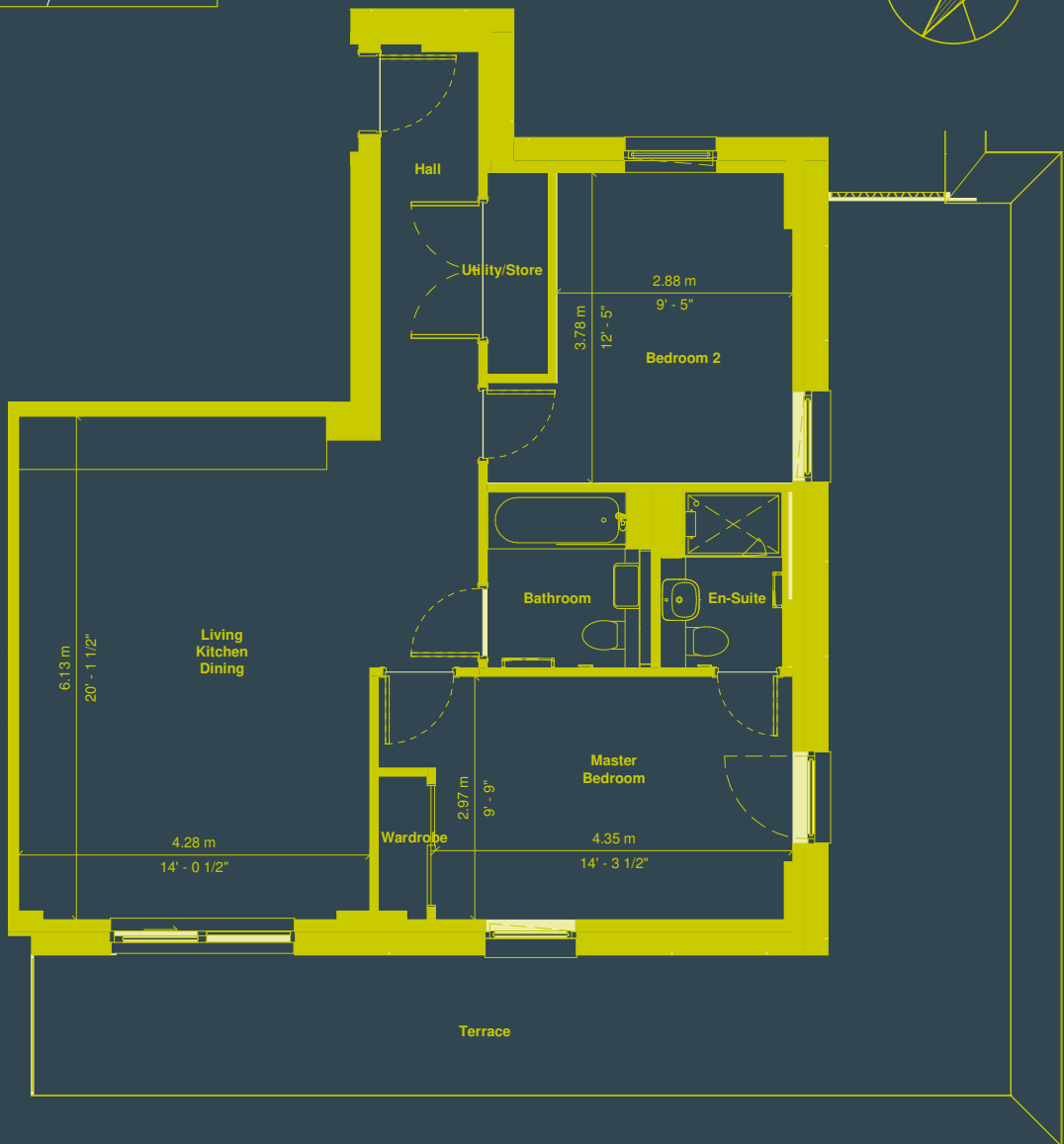
TYPE 2B4P-L



TOTAL AREA: 74.3m²/799.8ft²

APT
06.08

LVL
6



PLEASE NOTE THAT WINDOW, DOOR, BALCONY AND TERRACE CONFIGURATIONS MAY VARY DEPENDING ON PLOT. KITCHEN LAYOUTS ARE INDICATIVE ONLY. PLEASE CHECK WITH YOUR SALES ADVISOR FOR DETAILS.