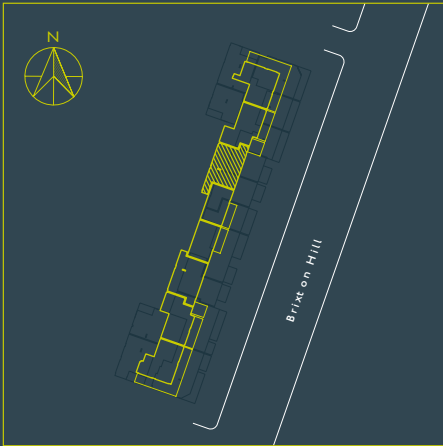


TWO BEDROOM

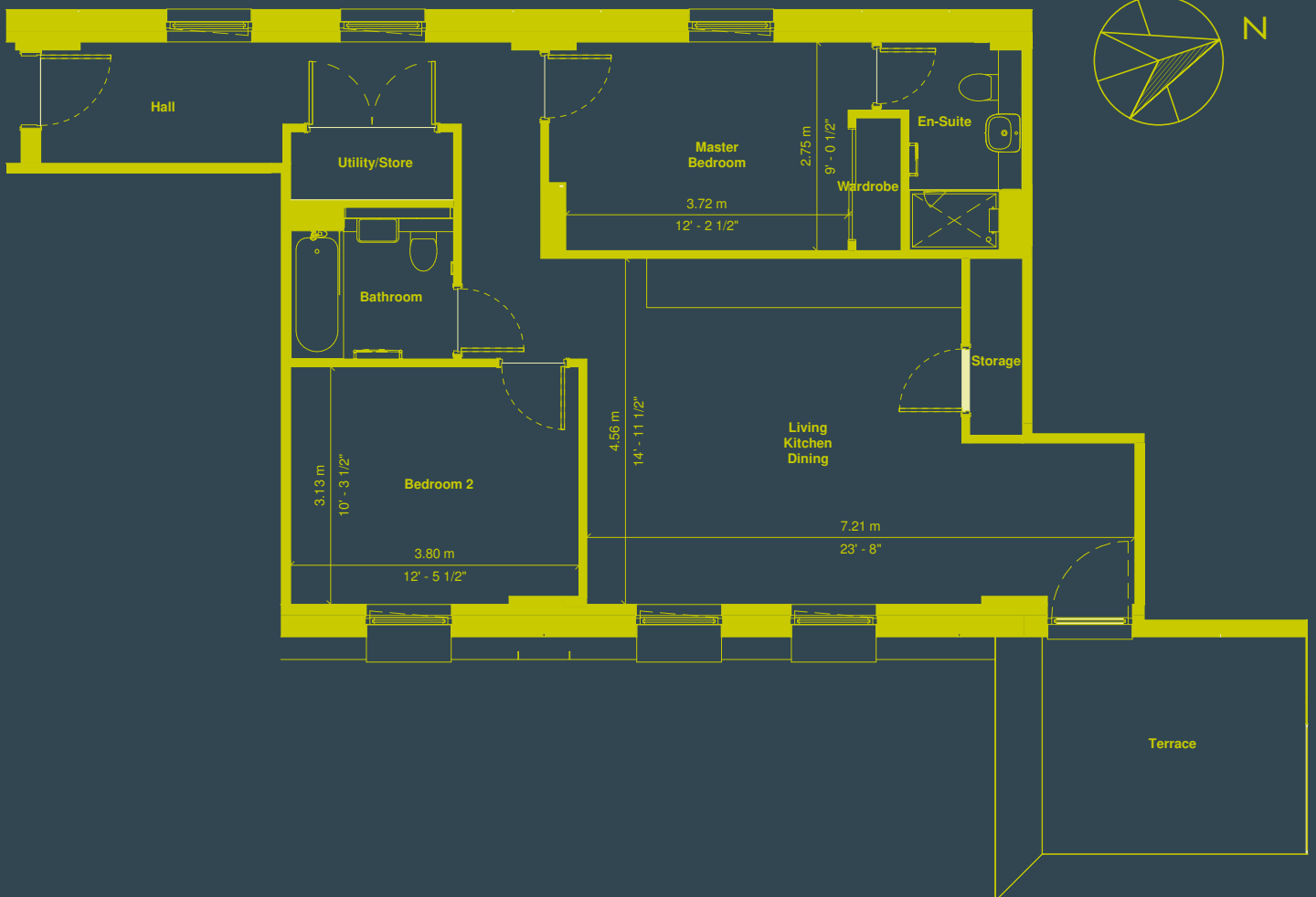
TYPE 2B4P-P



TOTAL AREA: 79.4m²/854.7ft²

APT
06.03

LVL
6



PLEASE NOTE THAT WINDOW, DOOR, BALCONY AND TERRACE CONFIGURATIONS MAY VARY DEPENDING ON PLOT. KITCHEN LAYOUTS ARE INDICATIVE ONLY. PLEASE CHECK WITH YOUR SALES ADVISOR FOR DETAILS.